



®

LSOMAX

Flachverblender

FACING BRICKS

der naturgetreue, handgebackene

Natural - Hand-baked



ISOMAX

FACING BRICKS

A BRICKWORK OR TILED FACADE IS A
FACADE OF LASTING BEAUTY.

We are all familiar with the brick facades of Belgium, Holland, Northern Germany, England, Switzerland and the United States. We know that in these countries brickwork must resist extreme weather conditions, and precisely in these regions facing bricks have stood the test of time. With their attractive, hand-formed texture, facades made of facing bricks fit in well with any landscape and add an element of style to their surroundings. ISOMAX Facing Bricks are equally suitable for a newly constructed building and for renovation of an older building, be it an elegant business establishment, a private home or an edifice of historical importance. Both poured concrete and masonry walls can be faced with ISOMAX Facing Bricks, as can insulated construction systems and prefabricated elements.



ISOMAX Facing Bricks can be used on all dry, firm surfaces. They can serve as a final covering for cellular concrete as well as for the remodeling or transformation of concrete walls. In the area of pre-fabricated houses and other light weight structural systems, ISOMAX Facing Bricks are ideal for all possible constructions and materials, such as compressed chip-board, whether joined with cement or glue, and plasterboard.





ISOMAX

FACING BRICKS

BEFORE



NEW SPLENDOR FOR A PRE-FABRICATED HOME

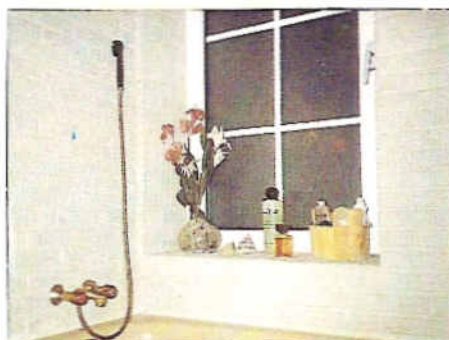
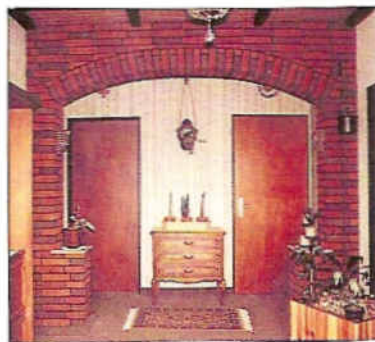
This example shows that ISOMAX Facing Bricks harmonize beautifully and stylishly with natural sandstone.

AFTER



OLD FORMS AND TECHNIQUES HEIGHTEN THE COMFORT OF THE INTERIOR OF THE HOME.

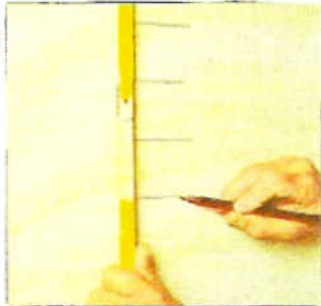
Who wouldn't enjoy relaxing in front of this fireplace perhaps puffing at a favorite pipe or sipping an old Port? These are only a few of the many possible ways in which ISOMAX Facing Bricks can be applied in interior decoration. ISOMAX Facing Bricks are particularly advantageous in areas where both their visual and technical characteristics play a role. In hallways and staircases, schools and office buildings, for example, their high resistance to abrasion and their durability count just as much as their appealing appearance. In a public swimming pool or a private bathroom, ISOMAX Facing Bricks are called for due to their aesthetic possibilities as well as their low absorbency and the fact that they are highly resistant to acids and alkaline solutions.



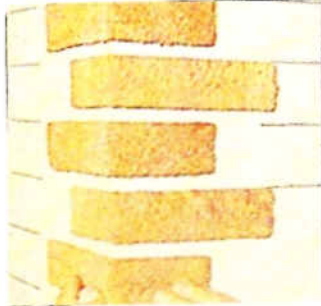


ISOMAX

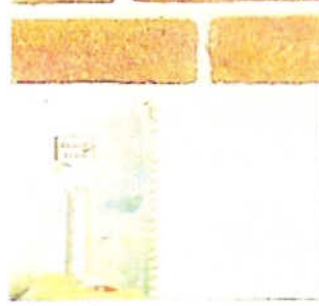
F A C I N G B R I C K S



Mark the raws, inset from the corner approximately 6 cm depending on the space between the bricks.



Place the ISOMAX Corner Facing Bricks in an alternating pattern on the corners.



Apply mortar with a notched spreader, preparing no more adhesive than you can cover within the drying time.



Press the entire surface of the ISOMAX Facing Bricks lightly into the mortar in the desired pattern using a string guide to keep the rows straight.

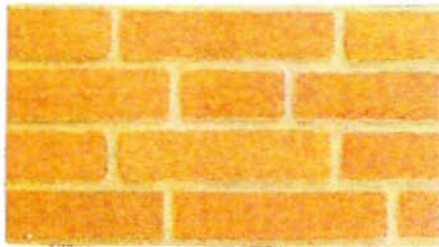


After the ISOMAX Facing Bricks have been placed and straightened, paint the wet mortar in the cracks with a 10-15cm brush. Do not use water. Finally, brush down the surface with a hard broom.

ISOMAX Facing Bricks, which are made of natural coloured quartz sand, guarantee lasting true colour and weather resistance. These bricks, only 4-6 cm thick, are to be mixed before they are applied so that ISOMAX Facing Brick walls of assorted colour tones cannot be distinguished from real brickwork walls.

ISOMAX Facing Bricks are outstanding as a decorative finish for rough-cast rendered exterior and interior surfaces, concrete, cellular concrete, plaster, compressed chipboard, etc. older rendered exterior facades can also be transformed into attractive brickwork.

ISOMAX Facing Bricks, as applied to insulating surfaces, can be used in combination with the ISORAST/ISOMAX fully insulated construction system or with new insulating on existing buildings.



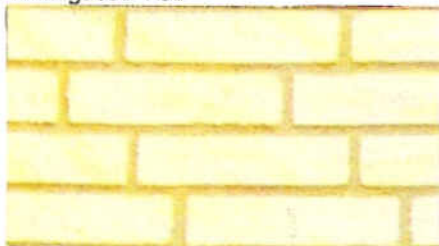
Variegated Red



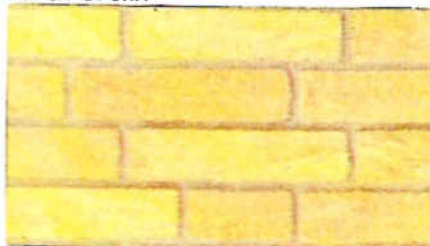
Earth Brown



Classic Brown



Antique White



Sand



Terracotta

ISOMAX CASTELLUM INVESTMENT A.G.

15, route de Grundhof

P.O. Box 33

L-6315 BEAUFORT

Tel. : 8 68 58